

With ColorVu, You'll Enjoy:

Images shot by ColorVu camera were with supplementary light OFF

True Color Information

- Accurate color rendering
- Excellent performance in low-light environments



Unable to identify color



Accurate color

More Details

- Clearly captured color information
- Richer details compared to black and white imaging



Lost details



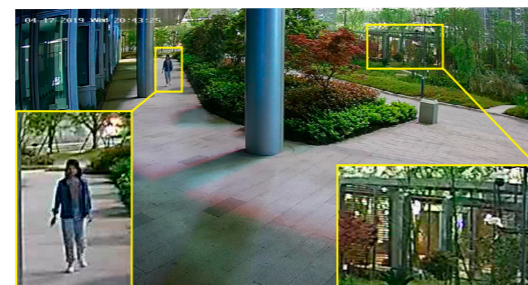
Rich color-related details

Better Visual Experience

- Balanced brightness
- F1.0 super aperture and advanced sensor guarantee realistic rendering



Blurry



Sharp

24/7 Colorful Imaging View in color, Even in darkness



Headquarters
No.555 Qianmo Road, Binjiang District,
Hangzhou 310051, China
T +86-571-8807-5998
overseasbusiness@hikvision.com



HIKVISION

www.hikvision.com

Combining Great Technologies for Greater Image Quality





AcuSense NVR

 <p>DS-7732NXI-I4(/16P)/4S 32-Channel 4-HDD AcuSense NVR</p>	<ul style="list-style-type: none"> • Up to 32-ch IP cameras for access • Deep learning-based behavior analysis • 4-ch false alarm reduction • Support quick target search • H.265/H.265+/H.264/H.264+/MPEG4 supported decoding formats • 256 Mbps/200 Mbps for incoming/outgoing bandwidth • 12-ch 1080p decoding • 2 HDMI, 1 VGA and 1 CVBS output • eSATA by default • Optional 16 PoE ports, with /16P model • 1.5U chassis 	 <p>DS-7716NXI-I4(/16P)/4S 16-Channel 4-HDD AcuSense NVR</p>	<ul style="list-style-type: none"> • Up to 16-ch IP cameras for access • Deep learning-based behavior analysis • 4-ch false alarm reduction • Support quick target search • H.265/H.265+/H.264/H.264+/MPEG4 supported decoding formats • 256 Mbps/200 Mbps for incoming/outgoing bandwidth • 12-ch 1080p decoding • 2 HDMI, 1 VGA and 1 CVBS output • eSATA by default • Optional 16 PoE ports, with /16P model • 1.5U chassis
 <p>DS-7616NXI-I2(/16P)/4S 16-Channel 2-HDD AcuSense NVR</p>	<ul style="list-style-type: none"> • Up to 16-ch IP cameras for access • Deep learning-based behavior analysis • 4-ch false alarm reduction • Support quick target search • H.265/H.265+/H.264/H.264+/MPEG4 supported decoding formats • 160 Mbps/256 Mbps for incoming/outgoing bandwidth • 12-ch 1080p decoding • 1 HDMI, 1 VGA and 1 CVBS output • Optional 16 PoE ports, with /16P model • 1U chassis 	 <p>DS-7608NXI-I2(/8P)/4S 8-Channel 2-HDD AcuSense NVR</p>	<ul style="list-style-type: none"> • Up to 8-ch IP cameras for access • Deep learning-based behavior analysis • 4-ch false alarm reduction • Support quick target search • H.265/H.265+/H.264/H.264+/MPEG4 supported decoding formats • 80 Mbps/256 Mbps for incoming/outgoing bandwidth • 12-ch 1080p decoding • 1 HDMI, 1 VGA and 1 CVBS output • Optional 8 PoE ports, with /8P model • 1U chassis

ColorVu Camera

<p>4 MP</p>  <p>DS-2CD204761-L 4 MP ColorVu Network Bullet Camera</p> <ul style="list-style-type: none"> • 4 MP resolution • 2.8/4/6 mm fixed lens, optional • Colorful imaging 24/7 • H.265+/H.265 • IP 67 • 120 dB WDR 	 <p>DS-2CD234761-L(U) 4 MP ColorVu Network Turret Camera</p> <ul style="list-style-type: none"> • 4 MP resolution • 2.8/4/6 mm fixed lens, optional • Colorful imaging 24/7 • H.265+/H.265 • IP67/IP66(-U) • 120 dB WDR • -U: build-in microphone 	 <p>DS-2CD2T4761-L 4 MP ColorVu Network Bullet Camera</p> <ul style="list-style-type: none"> • 4 MP resolution • 2.8/4/6 mm fixed lens, optional • Colorful imaging 24/7 • H.265+/H.265 • IP 67 • 120 dB WDR
<p>2 MP</p>  <p>DS-2CD202761-L 2 MP ColorVu Network Bullet Camera</p> <ul style="list-style-type: none"> • 2 MP resolution • 2.8/4/6 mm fixed lens, optional • Colorful imaging 24/7 • H.265+/H.265 • IP 67 • 120 dB WDR 	 <p>DS-2CD232761-L(U) 2 MP ColorVu Network Turret Camera</p> <ul style="list-style-type: none"> • 2 MP resolution • 2.8/4/6 mm fixed lens, optional • Colorful imaging 24/7 • H.265+/H.265 • IP67/IP66(-U) • 120 dB WDR • -U: build-in microphone 	 <p>DS-2CD2T2761-L 2 MP ColorVu Network Bullet Camera</p> <ul style="list-style-type: none"> • 2 MP resolution • 2.8/4/6 mm fixed lens, optional • Colorful imaging 24/7 • H.265+/H.265 • IP 67 • 120 dB WDR

NVR

 <p>DS-7732NI-I4/24P 32-Channel 4-HDD NVR</p> <ul style="list-style-type: none"> • Up to 32-ch IP cameras for access • H.265/H.265+/H.264/H.264+/MPEG4 supported decoding formats • 320 Mbps/256 Mbps for incoming/outgoing bandwidth • 16-ch 1080p decoding • 2 HDMI, 1 VGA and 1 CVBS output • eSATA by default • 24 PoE ports • 1.5U chassis 	 <p>DS-7732NI-I4(/16P)(B) 32-Channel 4-HDD NVR</p> <ul style="list-style-type: none"> • Up to 32-ch IP cameras for access • H.265/H.265+/H.264/H.264+/MPEG4 supported decoding formats • 256 Mbps/256 Mbps for incoming/outgoing bandwidth • 16-ch 1080p decoding • 2 HDMI, 1 VGA and 1 CVBS output • eSATA by default • Optional 16 PoE ports, with /16P model • 1.5U chassis 	 <p>DS-7716NI-I4(/16P)(B) 16-Channel 4-HDD NVR</p> <ul style="list-style-type: none"> • Up to 16-ch IP cameras for access • H.265/H.265+/H.264/H.264+/MPEG4 supported decoding formats • 160 Mbps/256 Mbps for incoming/outgoing bandwidth • 16-ch 1080p decoding • 2 HDMI, 1 VGA and 1 CVBS output • eSATA by default • Optional 16 PoE ports, with /16P model • 1.5U chassis
 <p>DS-7616NI-I2(/16P) 16-Channel 2-HDD NVR</p> <ul style="list-style-type: none"> • Up to 16-ch IP cameras for access • H.265/H.265+/H.264/H.264+/MPEG4 supported decoding format • 160 Mbps/256 Mbps for incoming/outgoing bandwidth • 16-ch 1080p decoding • 1 HDMI, 1 VGA and 1 CVBS output • Optional 16 PoE ports, with /16P model • 1U chassis 	 <p>DS-7608NI-I2(/8P) 8-Channel 2-HDD NVR</p> <ul style="list-style-type: none"> • Up to 8-ch IP cameras for access • H.265/H.265+/H.264/H.264+/MPEG4 supported decoding format • 80 Mbps/256 Mbps for incoming/outgoing bandwidth • 16-ch 1080p decoding • 1 HDMI, 1 VGA and 1 CVBS output • Optional 8 PoE ports, with /8P model • 1U chassis 	